

Optyka / Optics



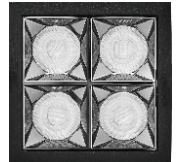
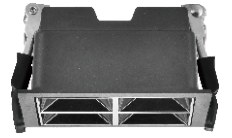
M
 α 30°

*Eliptyczna optyka uzyskiwana jest przez użycia akcesoriów

*Elliptical optics are obtained by installing the specific accessory



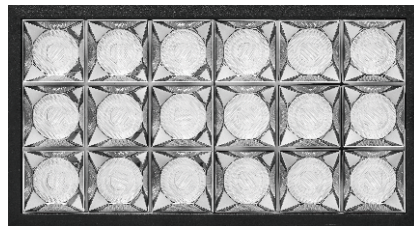
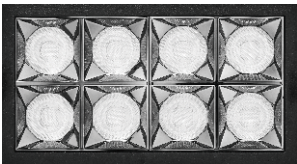
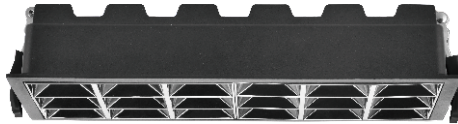
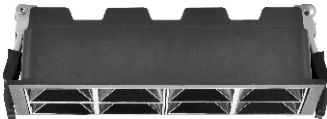
White Black



190x46

388x45

82x82

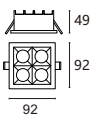


157x82

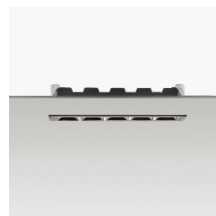
234x120



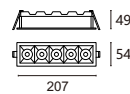
Source	W	lm	Optic	Code
82x82				
3000K-CRI 80				
SMD	15W	1210	30°	8861 303
4000K-CRI 80				
SMD	15W	1310	30°	8861 303
6000K-CRI 80				
SMD	15W	1380	30°	8861 303



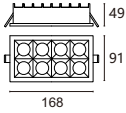
82x82



Source	W	lm	Optic	Code
190x46				
3000K-CRI 80				
SMD	20W	1680	30°	8861 304
4000K-CRI 80				
SMD	20W	1810	30°	8861 304
6000K-CRI 80				
SMD	20W	1900	30°	8861 304

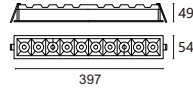
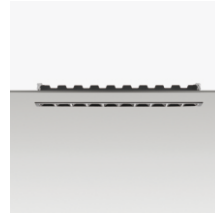


190x46



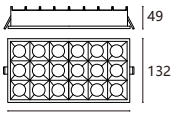
157x82

Source	W	lm	Optic	Code
157x82				
3000K- CRI 80				
SMD	30W	2450	30°	8861 305
4000K- CRI 80				
SMD	30W	2650	30°	8861 305
6000K- CRI 80				
SMD	30W	2780	30°	8861 305



388x45

Source	W	lm	Optic	Code
388x45				
3000K- CRI 80				
SMD	35W	3300	30°	8861 307
4000K- CRI 80				
SMD	35W	3560	30°	8861 307
6000K- CRI 80				
SMD	35W	3740	30°	8861 307

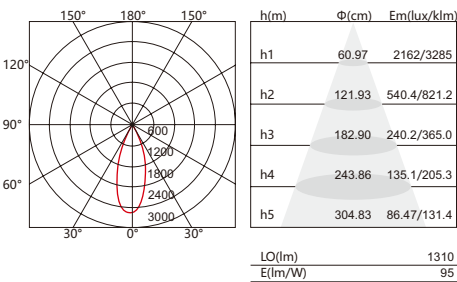


234x120

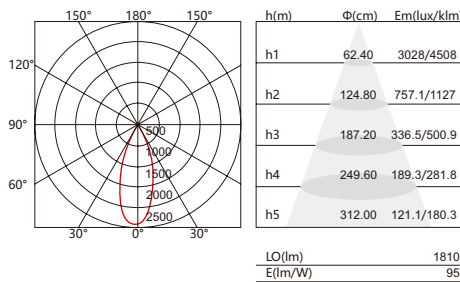
Source	W	lm	Optic	Code
234x120				
3000K- CRI 80				
SMD	60W	5475	30°	8861 309
4000K- CRI 80				
SMD	60W	5750	30°	8861 309
6000K- CRI 80				
SMD	60W	5920	30°	8861 309

Krzywe rozłożenia światła / Light distribution curves

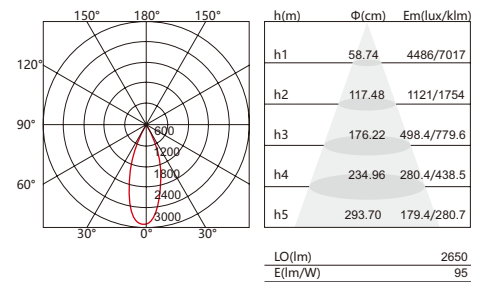
15W - 30°



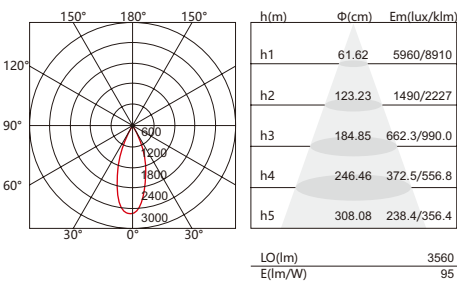
20W - 30°



30W - 30°



35W - 30°



60W - 30°

